



ananea
slow glamour

HOTEL OVERVIEW

the vision

ananea Hotels offer unique holiday experiences that combine lifestyle with casual elegance and nature-inspired design to create one-of-a-kind holiday experiences! The lifestyle hotel brand stands out for its uniqueness and can best be described by Ludwig Mies van der Rohe's famous quote: "Less is more". Each hotel is a labour of love, furnished with great attention to detail and reflecting the inspiration of the surrounding landscape and local culture. Spending time with like-minded people and the well-being of body and soul are paramount, making ananea an incomparable hotel brand that stands out for its style and positivity. This is where people who share the same values and ideas come together and find their home in this unique lifestyle brand. Here, you are part of a community. Whether you are a gourmet, a soul seeker, a beach lover or an individualist, everyone feels at home in an ananea hotel.

the concept

To embody this philosophy in every aspect of the hotel experience, the ananea concept is woven around five cornerstones and the resulting eight touchpoints. These fundamental elements and guidelines are designed to create a holistic guest experience – one that will remain in the memory long after the stay is over.

The concept of slow glamour embodies a redefined approach to hospitality, which ultimately translates into a decelerated and relaxed holiday experience for guests.

It is about enjoying high-quality moments, thoughtful design and personalised service, rather than rushing through typical hotel offerings. This concept emphasises timelessness, sophistication and a dedication to craftsmanship and authenticity, creating an atmosphere where every detail contributes to an unforgettable stay.





chef & me experiences:

Chef & Me also offers the opportunity to prepare typical local dishes together with the head chef and immerse yourself in the culinary world of the respective destination. Insider storytelling included! In addition to a personal culinary experience, this strengthens the personal bond between guests and staff and creates an emotional atmosphere.

umi-cocktails á la ananea

Another special highlight are the signature UMI cocktails (which stands for "Unique Memorable Identity"), which reflect the culture, surroundings and identity of the hotel through unique and creative flavour combinations.



slow entertainment

Starting with a relaxed sundowner atmosphere, chill beats, live music from DJs, pianists, guitarists and local artists presenting highlights from their destination, exclusive wellness and fitness offers also ensure the perfect balance between relaxation and activity. Whether yoga, Pilates or workouts in the hotel's own gym – slow entertainment à la ananea.

tree of life

In every ananea hotel, you will find the characteristic "Tree of Life", which symbolises growth, vitality and connection with nature, in keeping with the hotel brand. Look forward to a warm, inviting and cosy atmosphere with soft, warm lantern light. A unique ambience and enchanting backdrop for special occasions, and also a popular photo spot for hotel guests.

meet like-minded people & feel at home

A stay at an ananea hotel is more than just a holiday – it is an experience shared with like-minded people. This is where people who share the same values and ideas come together and find a home in this unique lifestyle brand. Here, you are part of a community.



requirements

- 4-5 stars (local and international)
- use natural materials
- less of everything, but higher quality
- warm colours and strong contrasts
- social spaces
- restaurants with special themes with freshness, local food and high-quality ingredients
- slow entertainment without being pushy: barbecue, cinema nights, large tables for easy gathering with others, chill-evenings, unexpected surprises in every shape and form
- focus on sustainability

guest Experience at 8 touchpoints:

1 pre-arrival

2 arrival

3 rooms

4 public areas

5 mind, body & soul

6 f&b

7 departure

8 slow entertainment



exceptional architecture:

ananea hotels are not ordinary accommodations, but rather true oases of well-being that have been designed with the utmost care. Inspired by the surrounding landscape and local and regional culture, their minimalist elegance is reflected in the architecture and natural materials typical of the country. Here, you will immediately feel at home!

exquisite and local cuisine:

In culinary terms, ananea offers an exquisite selection of healthy and fresh dishes for gourmets. The use of local ingredients and the loving preparation make every meal a culinary experience of the highest standard.



Italy, Tropea

ananea Tropea Yachting Resort ◆◆◆◆

In the heart of Tropea in Italy (Calabria), the ananea Tropea Yachting Resort is located just a few metres from the harbour. Here, lifestyle meets casual elegance and Mediterranean minimalism. The charming town of Tropea enchants with its beautiful old town and offers plenty of opportunities for excursions and an eventful holiday. The hotel has 33 elegant rooms and suites with modern amenities and breathtaking views of the Tyrrhenian Sea.

- Location: approx. 1 km from Tropea railway station, approx. 60 km from Lamezia Terme Airport
- 33 rooms, completely renovated and converted in an elegant industrial style
- Just a few steps from the historic old town of Tropea
- À-la-carte restaurant & 1 bar, and pool
- Located in close proximity to the marina and the sea
- Board: breakfast and half board



Portugal, Algarve

ananea Castelo Suites Algarve ◆◆◆◆

ananea Castelo Suites Algarve is located in the picturesque region of Albufeira in the Algarve, Portugal. It offers 146 rooms and suites designed for comfort and style. The accommodations are equipped with modern amenities and offer spectacular views of the coast and the Monchique Mountains. The resort is located in the quiet vicinity of Praia do Castelo and Praia do Evaristo beaches.

- Location: approx. 45 km from Faro Airport, approx. 900–1,200 m from the beaches
- 146 rooms in 10 different categories
- Located on the breathtaking Algarve coast
- New ananea Lifestyle Hotel (new building opening in summer 2025)
- Design by Nini Andrade Silva (multi-award-winning Portuguese interior designer)
- Strong focus on sustainability and energy efficiency
- Roof terrace with rooftop bar and infinity pool
- Lounge area with breathtaking views over the Algarve coast
- Board: breakfast and half board



Greece, Kos

ananea Kos ◆◆◆◆

ananea Kos is located on the north coast of the Greek island of Kos and offers 74 beautifully designed rooms and suites. The hotel is situated in the heart of Tigaki, just a few steps from the beach. This stylish boutique hotel is the ideal choice for guests who want to enjoy both relaxation and tranquillity as well as traditional Greek cuisine to the fullest.

- Location: directly on the fine sandy beach, separated only by a road, approx. 11 km to the centre of Kos Town, approx. 15 km to the airport
- 74 rooms in 5 different categories
- Modern adults-only lifestyle hotel, ages 16 and up
- Exceptional architecture with many natural materials and wood
- Lounges with DJ music
- Regional food and drinks
- Stylish beach restaurant
- Board: breakfast, half board and all-inclusive



Greece, Kreta

ananea Rocrita ◆◆◆◆

ananea Rocrita will open in spring 2026, offering a unique blend of slow glamour and Cretan hospitality. Located on Crete's unspoilt coastline, the hotel offers comfortable accommodation with panoramic views of the azure Mediterranean Sea. Ideal for discerning families and couples who want to combine culinary diversity with relaxation and adventure, nestled in a dreamlike resort surrounded by enchanting scenery.

- Location: directly on the beach, approx. 1.5 km from the centre of Mochlos, approx. 95 km from the airport
- New ananea hotel in the north-east of Crete with a fantastic bay location
- Former Club Aldiana, completely modernised, renovated and expanded
- 360 comfortable rooms & swim-up suites
- Modern and family-friendly hotel in a quiet location
- Extensive culinary offerings with 4 à-la-carte restaurants, street food hub and main restaurant
- Kids' club and activity park
- 2 main pools, ninja splash pool, wellness centre and fitness area
- Board: all-inclusive

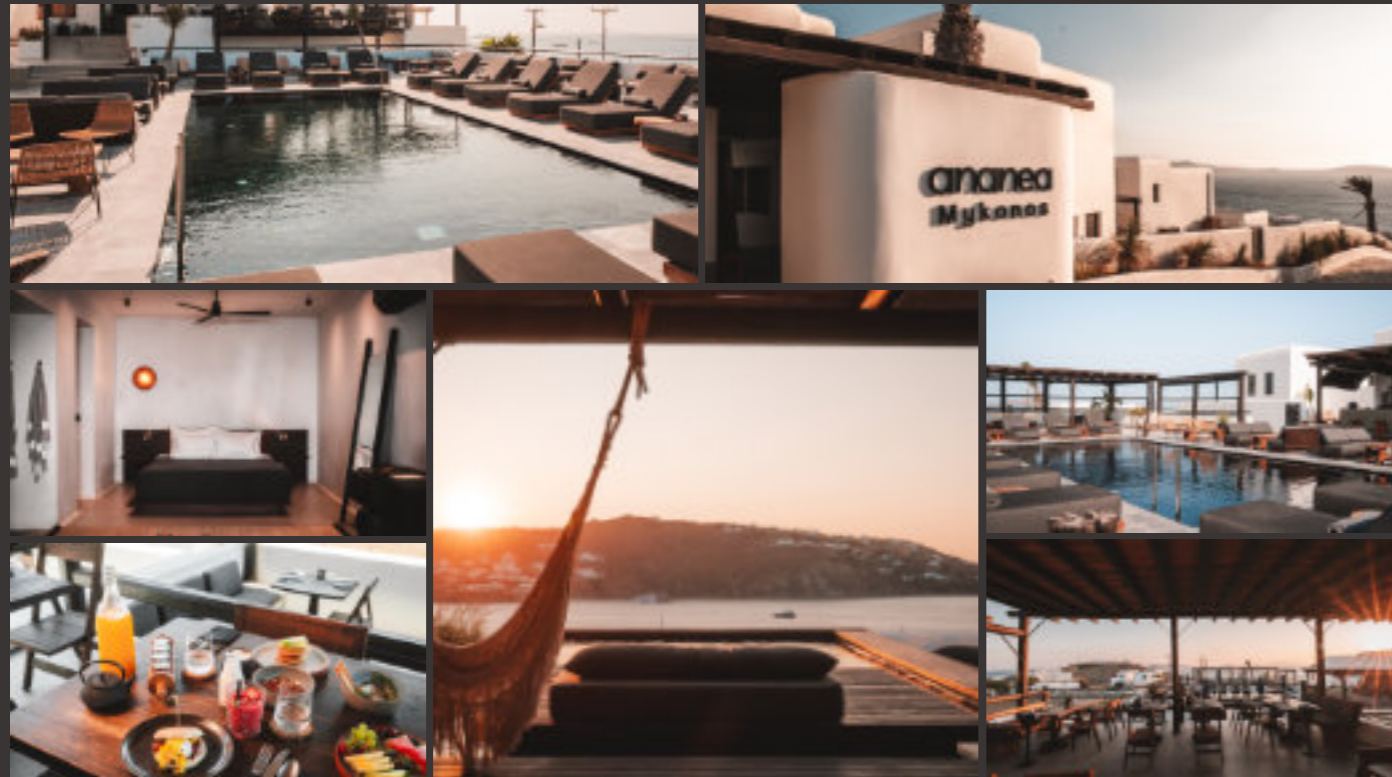


Greece, Mykonos

ananea Mykonos ◆◆◆◆

ananea Mykonos is located on the popular Greek island of Mykonos. The 26-room hotel features modern design and subtle colours that create a feel-good atmosphere for body and soul. Just 4 km from the city centre, the hotel offers its guests a relaxing and incomparable atmosphere.

- Location: approx. 150 m from the beach, approx. 4 km from Mykonos town centre, approx. 5.5 km from the airport
- Small adults-only complex with 26 rooms
- Charming lifestyle hotel on Mykonos
- À-la-carte restaurant with terrace and beautiful sea views
- Villa and suites with private pool available for booking
- 24-hour room service
- Yoga, fitness room and massages (some provided by external providers)
- Board: breakfast

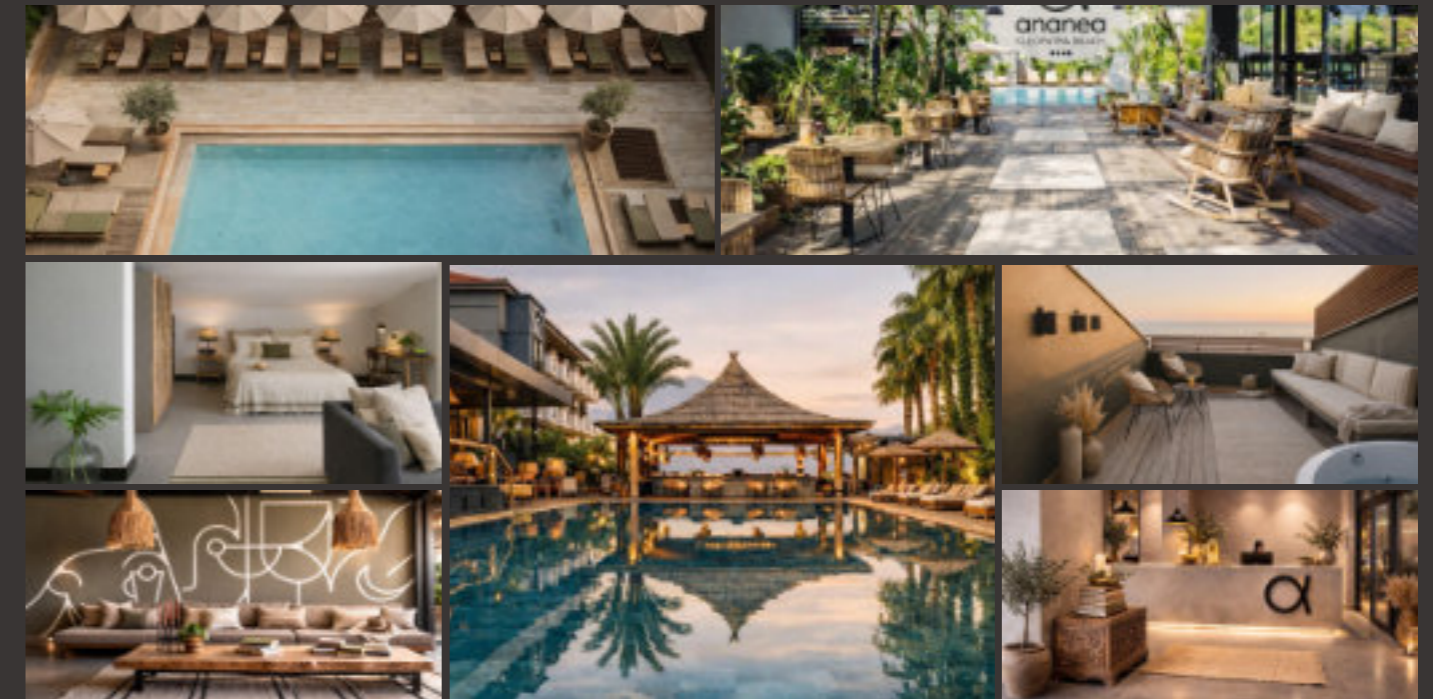


Türkiye, Alanya

ananea Kleopatra Beach ◆◆◆◆

The ananea Kleopatra Beach is a modern 4-star resort that combines comfort, entertainment and a sustainable hotel concept. The complex consists of five buildings with a total of 236 accommodation units, was last renovated in 2023 and will open in summer 2026 as a new ananea lifestyle hotel. Guests enjoy a lively yet relaxed atmosphere with a wide range of leisure and wellness facilities. Several pools, a year-round indoor pool, and spa and fitness areas ensure relaxation and activity. The hotel offers international cuisine in its à la carte restaurant as well as varied buffets with live cooking stations. The hotel places particular emphasis on environmental awareness, regional products and CO₂-neutral energy supply.

- Official country category: 4 stars
- Last renovation: 2023. Opening in summer 2026 as a new ananea hotel
- 236 accommodation units in 5 buildings
- 3 pools (seasonal) + indoor pool
- Spa, sauna, fitness area
- À-la-carte & buffet restaurant with live cooking station, bar
- Disco & VR rage rooms
- Direct location on Cleopatra Beach



Egypt, Hurghada

ananea Hurghada ◆◆◆◆

The ananea Hurghada in Egypt is a stylish adults-only hotel for anyone who values tranquillity, design and atmosphere. Inspired by the concept of slow glamour, this boutique hotel combines modern elegance with clean lines and a relaxed, contemporary interior design. The compact complex with 114 rooms creates a personal, almost private atmosphere. The beachfront rooms are particularly sought-after, offering a real holiday feeling with their direct location by the sea and fantastic views. Short distances, plenty of space and a harmonious design make the hotel a special address in Hurghada.

- Location: 50 metres from the beach, direct beachfront location, approx. 2 kilometres from Hurghada city centre,
- approx. 13 kilometres from Hurghada Airport
- 114 rooms in 4 different categories, some with whirlpool bath, as well as beachfront rooms
- New Ananea Lifestyle Hotel opening in summer 2025
- 2 à-la-carte restaurants, buffet restaurant with terrace
- Direct beach location
- Adults only (18 years and older)
- Board: all inclusive

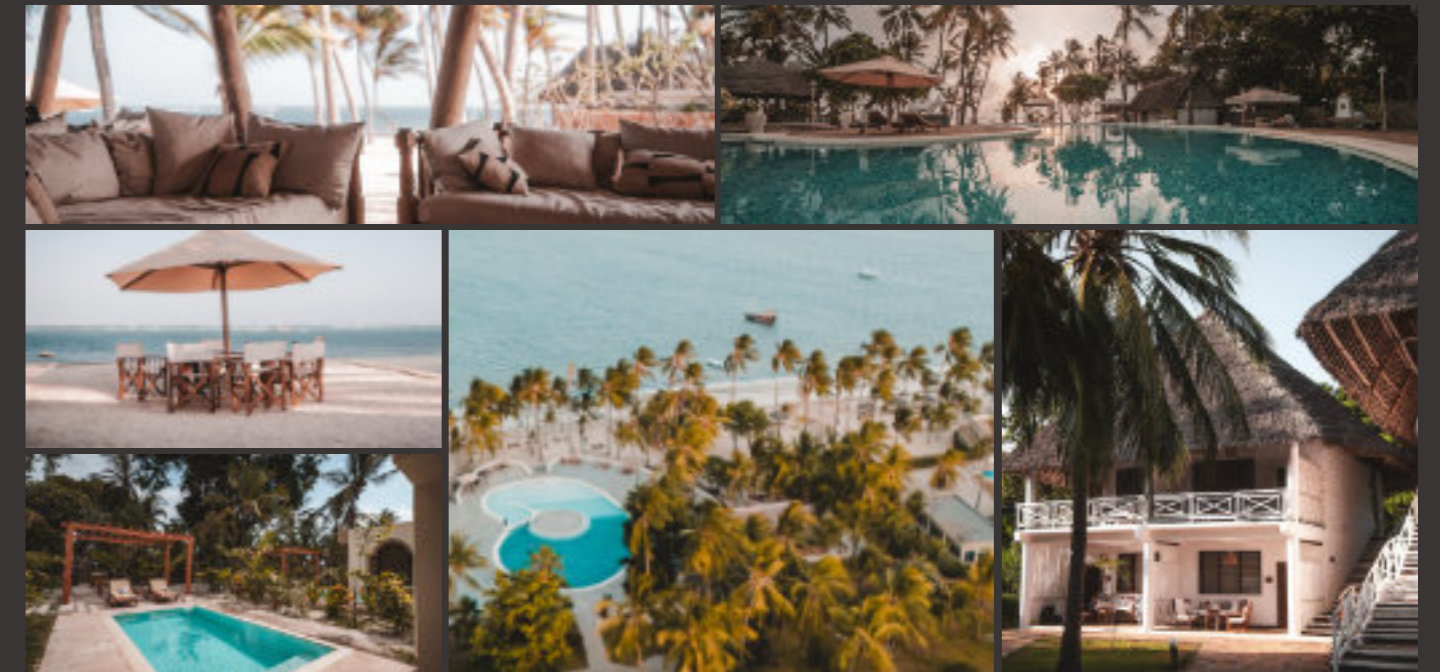


Kenia, Malindi

ananea Diamonds Malindi ◆◆◆◆

Welcome to Kenya, where guests can look forward to an unforgettable holiday at the ananea Diamonds Malindi. The hotel is situated right on the palm-fringed sandy beach and opened as a new ananea hotel in winter 2024/25. Here, the captivating power of the local natural surroundings meets traditional African hospitality. Another highlight is the free transfer to the hotel's own beach club, as well as the option of an overnight stay at Kudu Camp (included with stays of 7 nights or more) and the chance to book a safari (for a fee)!

- Location: directly on the beach, approx. 3 km from Malindi town centre, approx. 137 km from Mombasa Airport
- 134 rooms in various categories
- Wonderful location directly on the beach
- Partial renovation in 2024. Reopening under the ananea hotel brand in November 2024
- Surrounded by a tropical palm paradise
- Transfer to the hotel's own "Malaika Beach Club" included
- "Safari Experience Kudu Camp" in Tsavo National Park from 7 nights, 1 night included
- Board: All-inclusive and All-inclusive Plus
- Fully equipped conference centre for up to 400 people
- "Mvua African Rain SPA" to revitalise body and soul



Tanzania, Zanzibar

ananea Diamonds Mapenzi ◆◆◆◆

ananea Diamonds Mapenzi is located on the east coast of Zanzibar, directly on the long Kiwengwa Beach. The hotel blends perfectly into its natural surroundings and is surrounded by a lush tropical garden with palm trees and colourful bougainvillea. The resort is the perfect choice for guests looking for a retreat that offers a wonderful mix of relaxation, sport and comprehensive all-inclusive service.

- Location: directly on the long, white sandy beach (bathing shoes recommended), approx. 6 km from Kiwengwa town centre, approx. 45 km from Abeid Amani Karume International Airport
- 105 rooms in 8 different categories
- Set in beautiful, well-tended gardens
- Directly on the long, white sandy beach
- Opening in November 2024 under the ananea hotel brand
- Partial renovation in 2025
- Board: half board, all-inclusive
- 2 freshwater pools, 1 children's pool
- On-site beach bar
- Modern rooms and sea-front beach villas with private pools



Tansania, Sansibar

ananea Baron Hotel Zanzibar ◆◆◆◆

The exclusive 5* Ananea Baron Hotel Zanzibar is perfectly situated on the breathtaking east coast of the island of Zanzibar and, from summer 2027, will delight guests with a stylish premium all-inclusive concept and a total of 148 elegant suites, including 56 'Adults Only' swim-up suites for guests aged 16 and over, swim-up suites with direct pool access, and exclusive oceanfront suites with a private beach area. The idyllic setting on the white, fine-sandy private beach of Pwani Mchangani, surrounded by tropical palm trees and exotic nature, creates the ideal conditions for a relaxing holiday. Spacious pool areas, stylish restaurants and bars, as well as the high-quality spa and wellness facilities, ensure the utmost comfort and pure relaxation. There's no better way to wind down in the evening than with an exotic cocktail whilst enjoying the view of the Indian Ocean.

- Right on the private, white sandy beach of Piwani Mchangani
- Premium all-inclusive package
- Elegant swim-up suites & oceanfront suites
- Tropical gardens with a spacious pool areaft



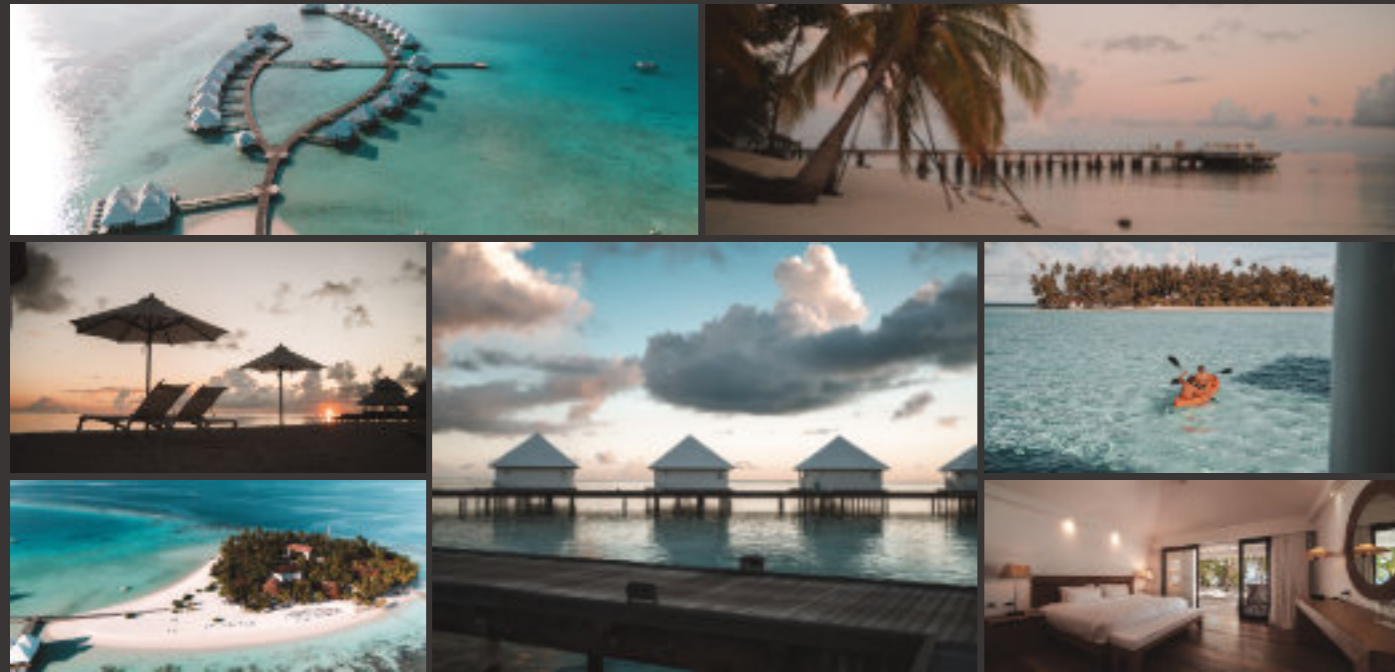
The images are renderings

Maldives, South Ari Atoll

ananea Diamonds Athuruga ◆◆◆◆

ananea Diamonds Athuruga offers an exclusive and incomparable atmosphere on an almost circular island in South Ari Atoll. The hotel comprises 70 stylish rooms, including beach bungalows, junior suites and water villas. The beautiful lagoon and house reef, just a few metres from the beach, delight snorkellers and divers alike. With four restaurants, including the Thari Over Water Restaurant serving European and Asian cuisine, the hotel offers a variety of culinary experiences.

- Location: Located in the middle of a lagoon on an almost circular island measuring approx. 220 m x 230 m
- Powder-fine sandy beach and tropical vegetation
- Transfer by seaplane, duration approx. 25 minutes from Malé Airport
- 70 rooms in 3 different categories
- Restaurants: 1 buffet restaurant and 2 à-la-carte restaurants, two bars, one beach bar and one overwater bar
- Popular holiday destination with many regular guests
- Stylish bungalows, suites and villas
- Fantastic house reef with many colourful fish and corals
- Board: All-inclusive, All-inclusive Plus

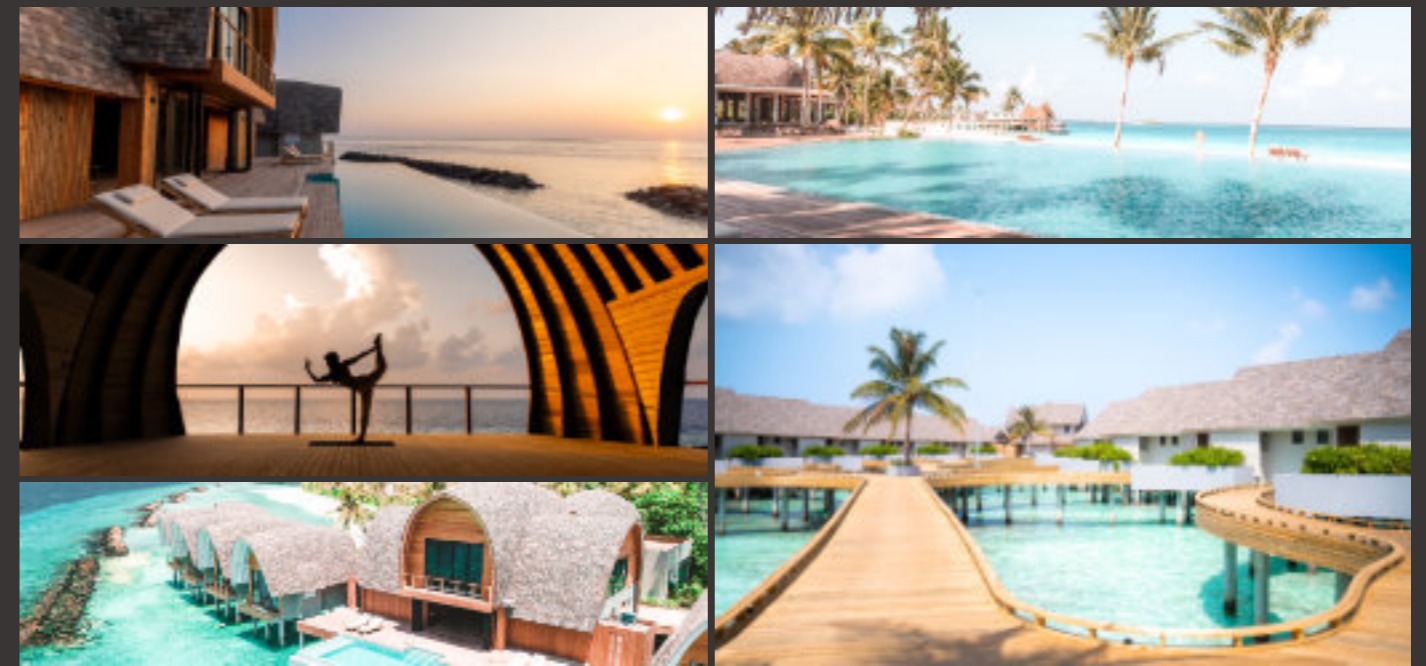


Maldives, North Ari Atoll

ananea Madivaru Maldives ◆◆◆◆

ananea Madivaru Maldives offers a luxurious and relaxed environment. Located in the middle of a large lagoon and surrounded by white sandy beaches, the resort spans two islands connected by an overwater jetty. The 111 villas with private pools impress with their minimalist design and modern comforts. The Overwater Spa and the approximately 60-metre-long infinity pool offer pure relaxation.

- Transfer by seaplane, duration approx. 25 minutes from Malé Airport
- 111 rooms in 9 different categories
- White sandy beaches and a species-rich house reef
- 9 restaurants, including Asian Food Street with 4 different restaurants
- Very spacious villas with private pools
- Ideal for divers and snorkellers
- Board: half board, half board plus and all-inclusive
- Kandu SPA: overwater spa with eight luxurious treatment rooms located above the water
- Fully equipped gym with breathtaking views of the Indian Ocean
- Yoga pavilion for inner peace

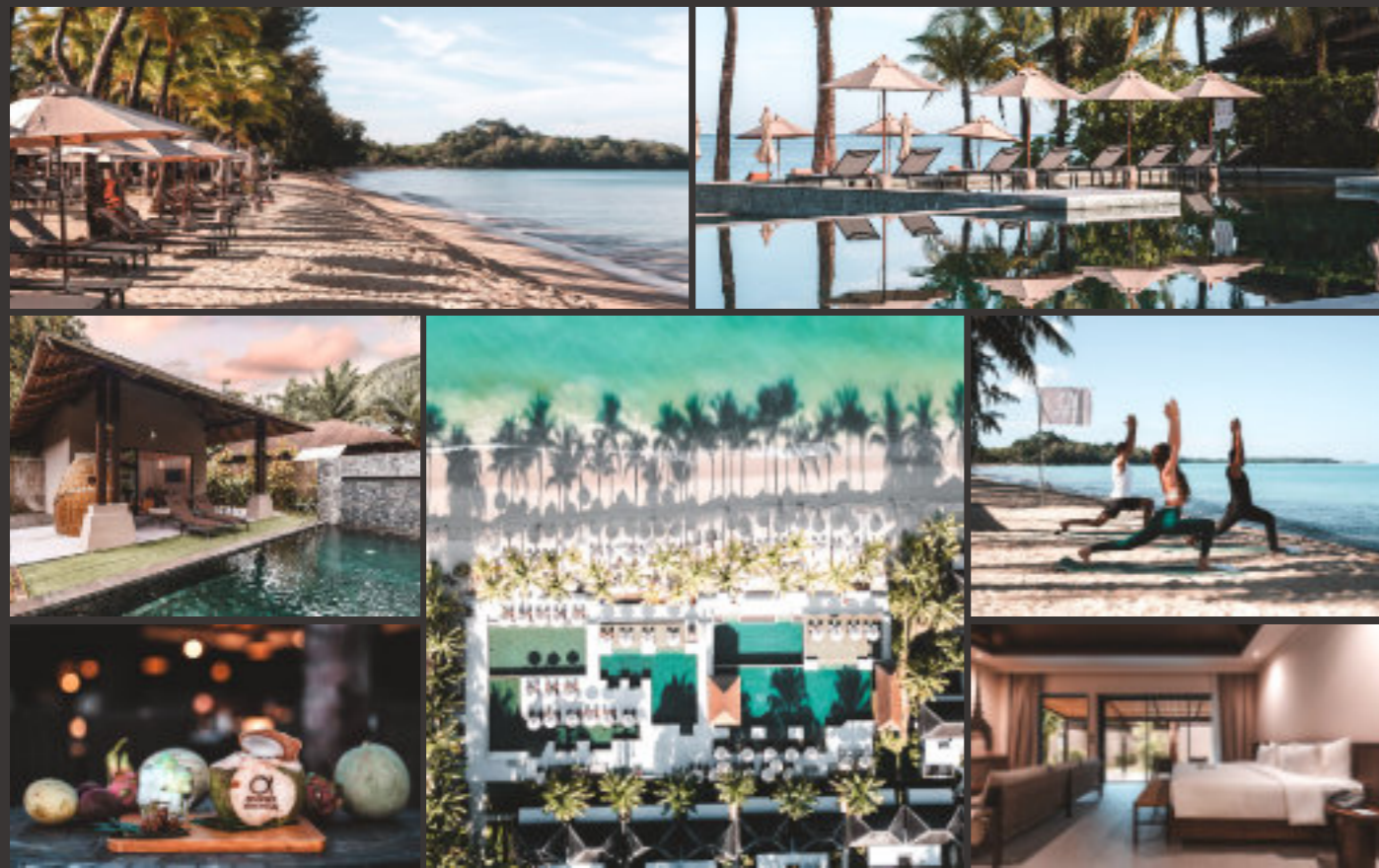


Thailand, Khao Lak

ananea Beyond Khaolak ◆◆◆◆

Experience the new ananea Hotel in Khao Lak from winter 2025/26. The adults-friendly villa resort for guests aged 16 and over is located on the kilometre-long Pakweep Beach. The spacious 2,000 square metre pool area offers an inviting alternative to the beach. Add: The numerous modern and spacious villas are a special highlight and ensure the highest level of comfort.

- 177 rooms, 5 stars
- Modern villa resort, directly on the kilometre-long Pakweep Beach
- Adult-friendly hotel, ideal for those seeking peace and quiet
- Beautiful pool area with 5 pools covering 2,000 m²
- 1 buffet restaurant, 1 steak restaurant and 2 bars (beach bar and swim-up bar)



ananea Hotels worldwide



Contact and further information:

✉ sales.dth@dertour.com
🌐 www.ananea.com
www.dertour-hotels.com
📷 [ananeahotels](https://www.instagram.com/ananeahotels)

Legal notice:

DERTOUR Hotels & Resorts GmbH
Humboldtstrasse 140-144
D-51149 Cologne, Germany

Managing Directors: Dr Ingo Burmester,
Christian Grage, Sebastian Spratte

Registered:

Cologne Local Court, HRB 51388.
All information is correct as of July 2026.
Subject to changes/printing errors.

