

ananea

ANANEA DIAMONDS MALINDI ****

Malindi, Kenya



HIGHLIGHTS

- Wonderful location directly on the beach
- Partial renovation in 2024, opening in winter 2024 under 'ananea'
- Surrounded by a tropical palm paradise
- Transfer to your own 'Explorean Malaika Beach Club' included (pre-booking required at reception the day before)
- 'Safari experience Kudu Camp' in the Tsavo National Park with 1 additional night bookable (MBA24005B)

LOCATION

Place

- Malindi, Kenya

Location

- directly on the beach
- to the airport: Mombasa, approx. 137 km
- to city centre: Malindi, approx. 3 km
- Sandy beach: approx. 185 m long, separated from the resort by a promenade, parasols, sun loungers, beach towel/bathing towel

FACILITIES

- Official national category: 4.5 stars
- Year of construction: 1987, last renovation: 2024
- Hotel language: English
- Number of accommodation units: 134
- Souvenir shop, (2 shops)
- 2 à la carte restaurants: 'The Terrace' (chargeable for guests in US1/XS1, UDG/XD1, JB1/JX1, FD1/FX1, WB1/WX1), and a restaurant on the beach (chargeable)
- Buffet restaurant: 'Savana', live cooking station, with terrace
- Pool bar, cocktail bar, 4 bars
- Welcome drink, room service (subject to charge), laundry service (subject to charge)
- 3 pools: (Garden Pool, Terrace Pool, Beach Pool), fresh water, parasols, sun loungers, pool towel

ROOMS

The hotel has a total of 134 rooms in the following categories: 27 superior double rooms, 44 deluxe double rooms, 12 deluxe family rooms, 12 deluxe swim-up suites, 4 suites, 27 junior suites, 6 junior suites with private pool and 2 deluxe suites with private pool. The room categories vary in size, but all have the following room facilities: mosquito net, bed, sofa, air conditioning, minibar, satellite TV, furnished veranda or balcony and a large bathroom.

BOARD

- All Inclusive: Breakfast (buffet), lunch (buffet or set menu), dinner (buffet or set menu), drinks free of charge (soft drinks, coffee/tea, beer, juices, local drinks, house wine, cocktails, long drinks, sparkling wine, water, 10am-0pm), coffee/tea and pastries (4.30pm-6pm)
- All Inclusive Plus: breakfast (buffet), lunch (buffet or set menu), dinner (buffet or set menu), drinks free of charge (soft drinks, coffee/tea, beer, juices, local drinks, cocktails, long drinks, sparkling wine, spirits, 10 am - 6 pm), coffee/tea and pastries (4.30 pm - 6 pm), check-out, massage (once per stay), admission to the spa area, snorkelling, room service
- À la carte restaurant: selection of different menus with fresh seafood

- Main restaurant: international and local cuisine, has a terrace with pool view
- Pool bar: drinks, snacks and fresh fruit

SPORTS & WELLNESS

Wellness for a fee (partly third-party providers)

- Mvua African Rain Spa
- whirlpool
- massages
- Cosmetic treatments
- Cures: Thalasso

Sports & entertainment included (partly third-party providers)

- beach volleyball
- boccea
- Billiards, darts
- fitness room
- Aquagym
- Kayak

Sports & entertainment for a fee (partly third-party providers)

- Golf course available: adjacent to the hotel, 9-hole
- Diving: Hotel's own diving centre

Children

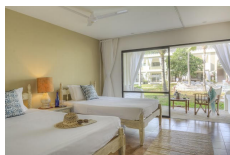
- Children's pool (outdoor): Fresh water
- Babysitting service (chargeable, on request)
- Children's buffet

ROOM TYPES



Double room superior

16-20 sqm, double, superior, garden view, double beds (1 king-size or 2 double beds), shower, hairdryer, air conditioning, fan, minibar, safe, coffee/tea, balcony or terrace in Masai garden area



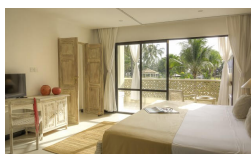
Double room deluxe

16-20 sqm, double, deluxe, garden view, double beds (1 king-size or 2 double beds), shower, hairdryer, air conditioning, fan, minibar, safe, coffee/tea, balcony or terrace in pool garden area



Family room deluxe

21-25 sqm, family, deluxe, garden view, double beds (1 king-size or 2 double beds), shower, hairdryer, air conditioning, fan, minibar, safe, coffee/tea, balcony or terrace



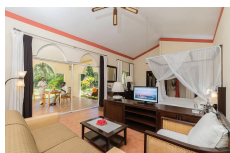
Suite

36-40 sqm, suite, garden view, separate bedroom, combined living/bedroom, double beds (1 king-size or 2 double beds), shower, hairdryer, air conditioning, fan, minibar, safe, TV (satellite TV), coffee/tea, balcony or terrace



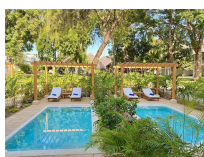
Junior suite Massai

31-35 sqm, junior suite, garden view, combined living/bedroom, double beds (1 king-size or 2 double beds), shower, hairdryer, air conditioning, fan, minibar, safe, coffee/tea, terrace



Junior Suite

61-70 sqm, junior suite, garden view, combined living/bedroom, double beds (1 king-size or 2 double beds), shower, hairdryer, air conditioning, fan, minibar, safe, TV (satellite TV), coffee/tea, balcony or terrace



Juniro Suite with private pool

61-70 sqm, junior suite, garden view, combined living/bedroom, double beds (1 king-size or 2 double beds), shower, hairdryer, air conditioning, fan, minibar, safe, TV (satellite TV), coffee/tea, terrace, private pool



Deluxe suite with private pool

81-90 sqm, suite, garden view, separate bedroom, combined living/bedroom, double beds (1 king-size or 2 double beds), shower, hairdryer, air conditioning, fan, minibar, safe, TV (satellite TV), coffee/tea, balcony or terrace, private pool



SAFARI IM KUDU CAMP

Guests staying at ananea Diamonds Malindi for a minimum of 7 nights can book the 'Kudu Camp Safari Experience' (minimum age 6 years). The 1 ½ day safari takes you to Tsavo East National Park (service MBA24005B Anf TA PX2). Room categories include Kudu Camp accommodation (XS1, XD1, FX1, DXQ, JX1, JX2, JX3, WX1, WX2).

Services:

When booking this room category, a 1 1/2-day stay at Kudu Camp at Tsavo East National Park including transfer, full board and soft drinks, local beer and wine until 22:00 is included in the price.

You also have the option of booking an impressive safari experience with a German-speaking driver-guide on site. The additional fee (payable on the spot) for game drives in Tsavo East National Park is €85 per adult/kid, plus park fees of \$52 per adult and \$35 per kid. Park fees are subject to change by the government without notice.

The programme would then be as follows:

Day 1:

At 7:30 am, after breakfast at ananea Diamonds Malindi, the drive to Tsavo East National Park begins. After entering the park, the game drive starts. At noon, you will have a bush picnic, served in a safe area with packed lunches, water, soft drinks and beer. At approx. 5:00 pm you will reach your luxury tented camp, where you can check in and spend some time by the pool admiring the spectacular sunset over the river, before heading to dinner at 7:30 pm and spending the night at Kudu Camp.

The well-appointed tents have been completely refurbished and are located directly on the Galana River with breathtaking views. Each tent has an en-suite bathroom.

Day 2:

At 6:00 am, hot drinks will be served and you will set off on an early morning game drive in Tsavo East National Park. You will return to camp for breakfast at around 9:30 am and leave for ananea Diamonds Malindi at around 11:00 am, arriving in time for lunch.

Notes:

IMPORTANT: Minimum stay at ananea Diamonds Malindi is 7 nights. You will be informed of the exact date of the safari at the hotel!

Meals: Full Board and All-Inclusive drinks (non-alcoholic soft drinks, local beer and wine until 22:00. Please note: AI plus bookings at ananea Diamonds Malindi cannot be considered at Kudu Camp)

Not included: Other meals and drinks, tips and personal expenses, as well as the additional fee for game drives and national park fees when booking a safari

During your stay at Kudu Camp, you can keep your room at ananea Diamonds Malindi, but you may have to vacate it if the hotel is very busy. Luggage can be stored at the hotel.

Subject to change without notice.

Transfers and game drives are conducted in a Land Cruiser (max. 6 guests in a Land Cruiser with a guaranteed window seat).